

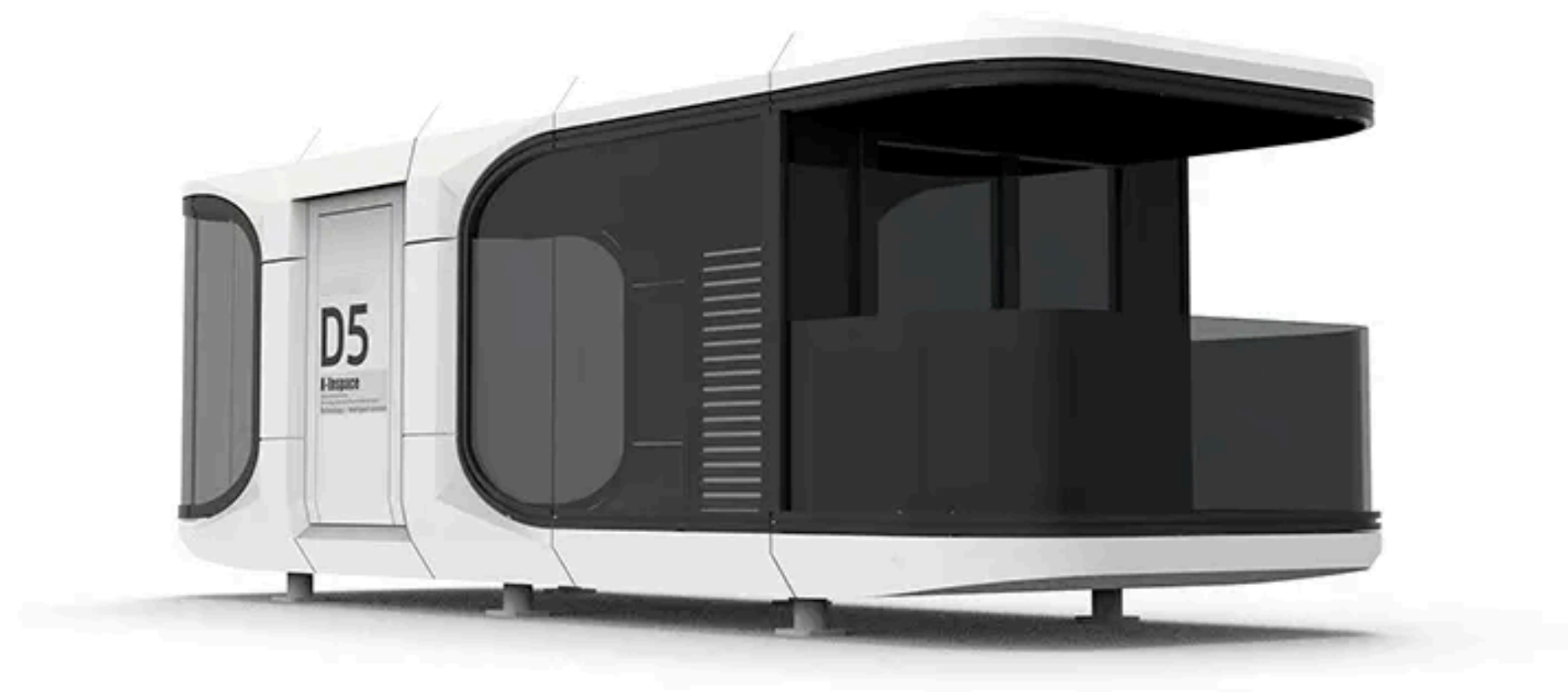


# SPACE CAPSUL HOMES

COMPACT YET FUNCTIONAL | MOVE-IN READY  
| DESIGNED FOR MODERN LIVING

---

WE PROVIDE INNOVATIVE 20FT & 40FT  
MODULAR HOMES DESIGNED FOR MODERN,  
FLEXIBLE LIVING



[WWW.CAPSUL.HOMES](http://WWW.CAPSUL.HOMES)

TEAM@CAPSUL.HOMES

(800) 674-9430



**Space Capsule Homes are modular, self-sufficient living spaces inspired by the engineering of space capsules. Designed for maximum functionality in minimal space, these homes combine innovative technology, ergonomic designs, and sustainability.**

# WELCOME TO SPACE CAPSUL HOMES



**Smart & Adaptable** – Built for efficiency.  
**Portable & Quick Setup** – Move-in ready.  
**Eco-Friendly & Affordable** – Sustainable living.





# INTRODUCING 20FT & 40FT SPACE CAPSUL HOMES

## 20FT SPACE CAPSUL HOME

Compact, versatile, and perfect for minimal living or workspace.

## 40FT SPACE CAPSUL HOME

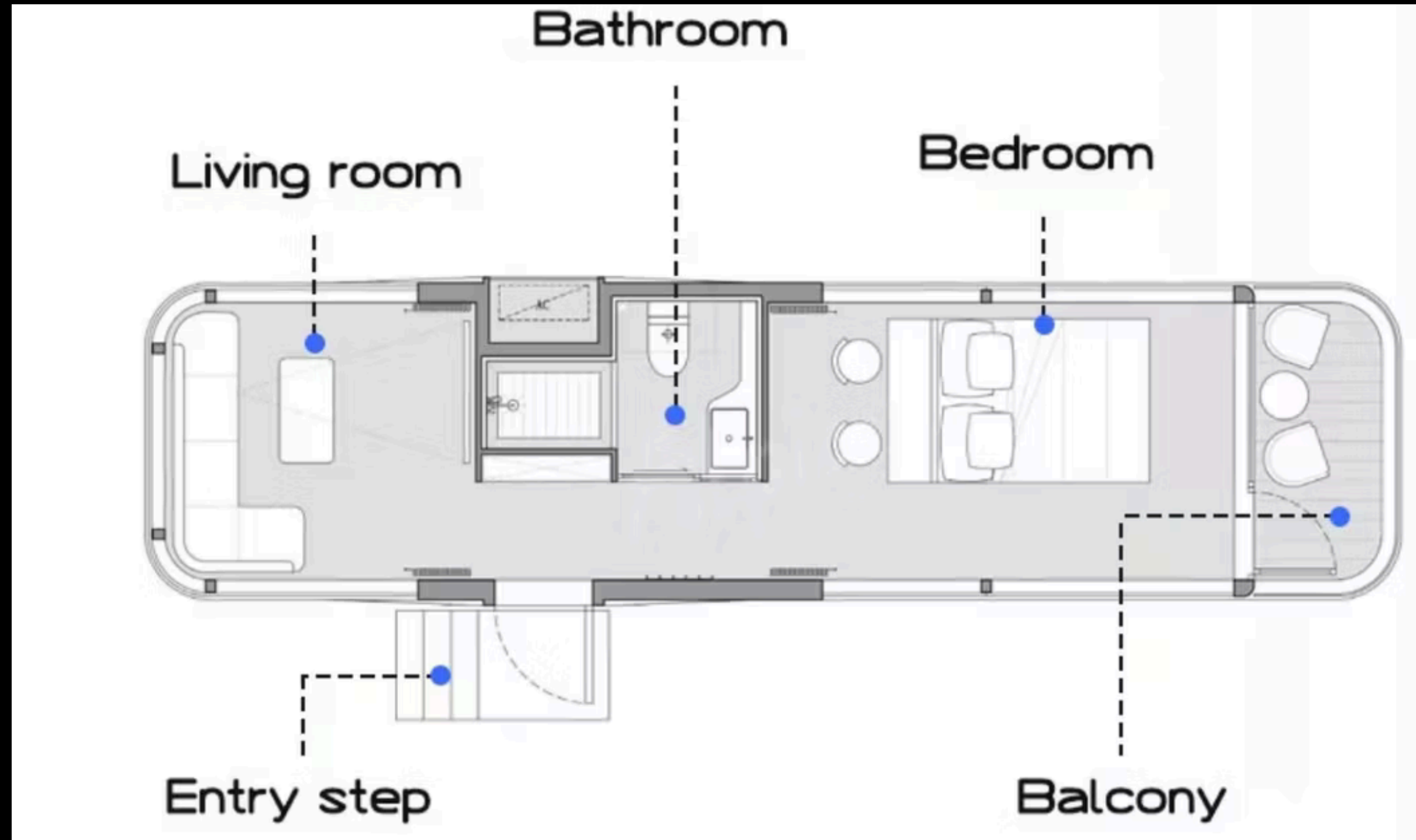
Spacious, functional, and equipped with a kitchen for full-time living.

Designed for flexibility, mobility, and sustainability, our 20ft and 40ft models offer a perfect balance of style and functionality



Durable, stylish, and designed for any environment. Ideal for homes, rentals, offices, or off-grid living. Smart, sustainable, and built for modern lifestyles.

# 20FT SPACE CAPSUL HOME



Floor Plan



# 20FT SPACE CAPSUL HOME

## Features

- BEDROOM
- LIVING AREA
- BATHROOM
- POWER POINT WITH USB PORT
- DOUBLE GLAZED WINDOWS
- POWER POINT WITH USB PORT

Compact yet spacious layout

Energy-efficient insulation & smart technology

Self-sufficient power solutions (solar-ready)

Ideal for single dwellers, rental units, or remote offices







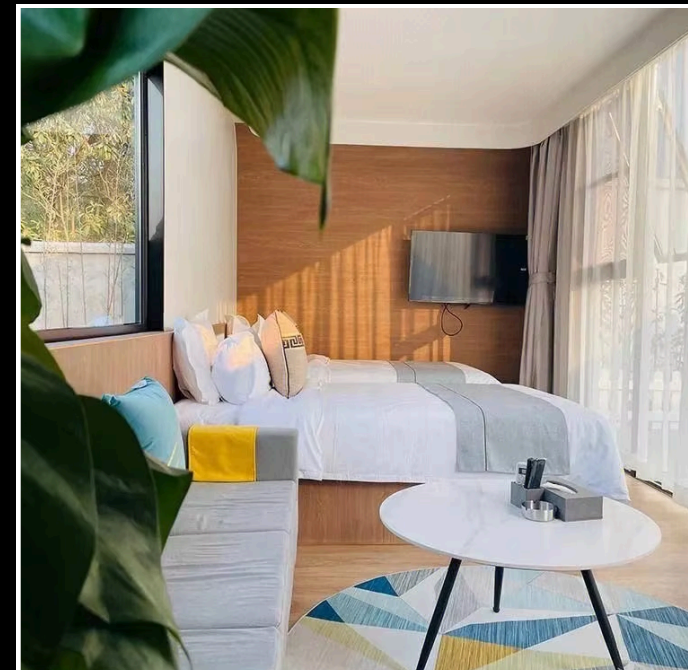
# 20FT SPACE CAPSUL INTERIOR

1. Tranquil Bedroom Retreat

2. Spa-Inspired Bathroom

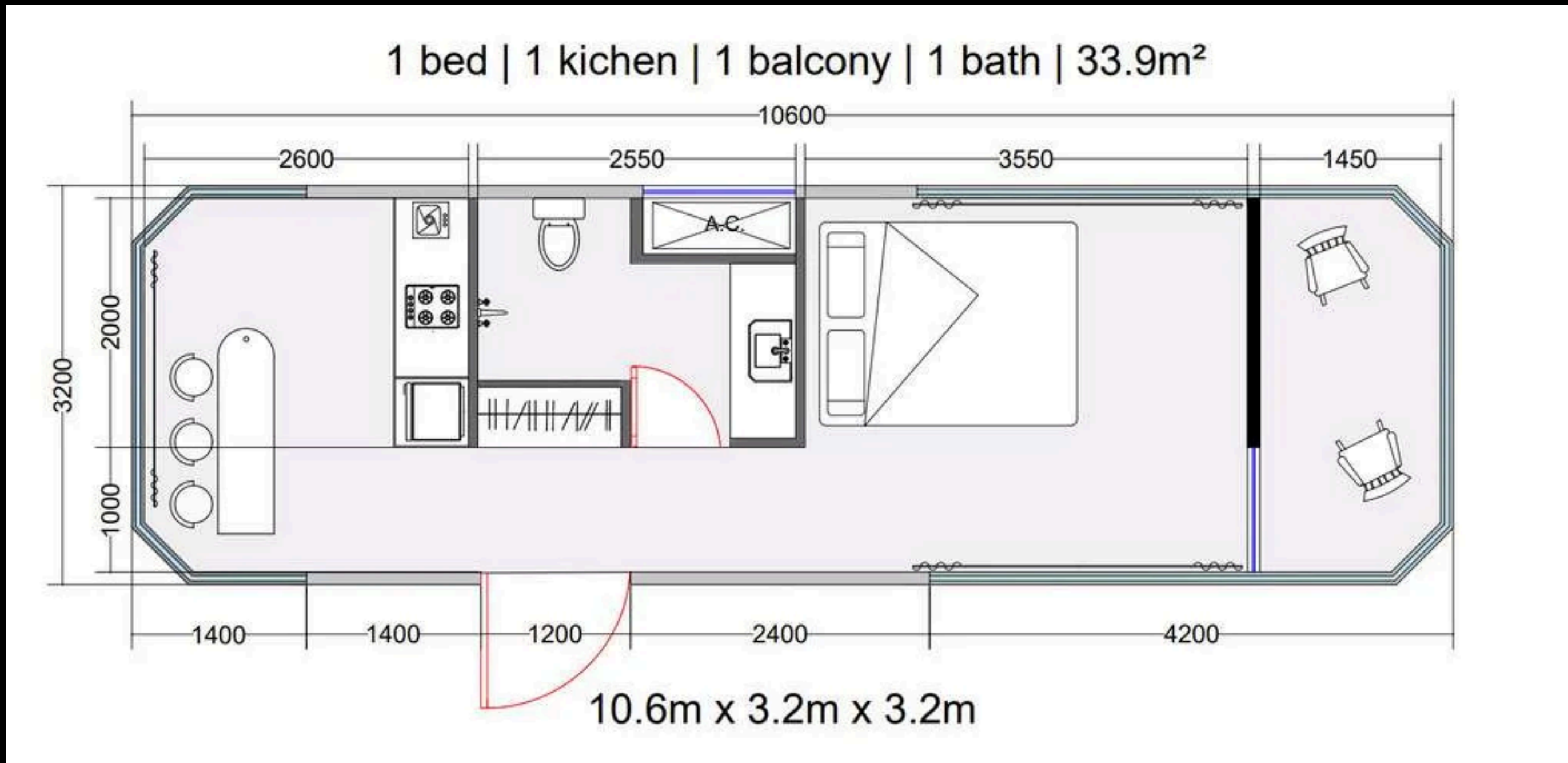
3. Contemporary Living Area

- Minimalist yet functional interior layout.
- Cozy sleeping and living area with space-saving storage.
- Smart climate control & energy-efficient insulation.
- Customizable design for various uses (home office, guest house, Airbnb).





# 40FT SPACE CAPSUL HOME



Floor Plan

# 40FT SPACE CAPSUL HOME

## Features

- KITCHEN
- BEDROOM
- LIVING AREA
- BATHROOM
- POWER POINT WITH USB PORT
- DOUBLE GLAZED WINDOWS
- POWER POINT WITH USB PORT

Expanded living space for families or shared living

Full kitchen with high-end appliances

Superior insulation & climate control

Off-grid & sustainable living compatibility







# 40FT SPACE CAPSUL INTERIOR

1. Tranquil Bedroom Retreat

2. Spa-Inspired Bathroom

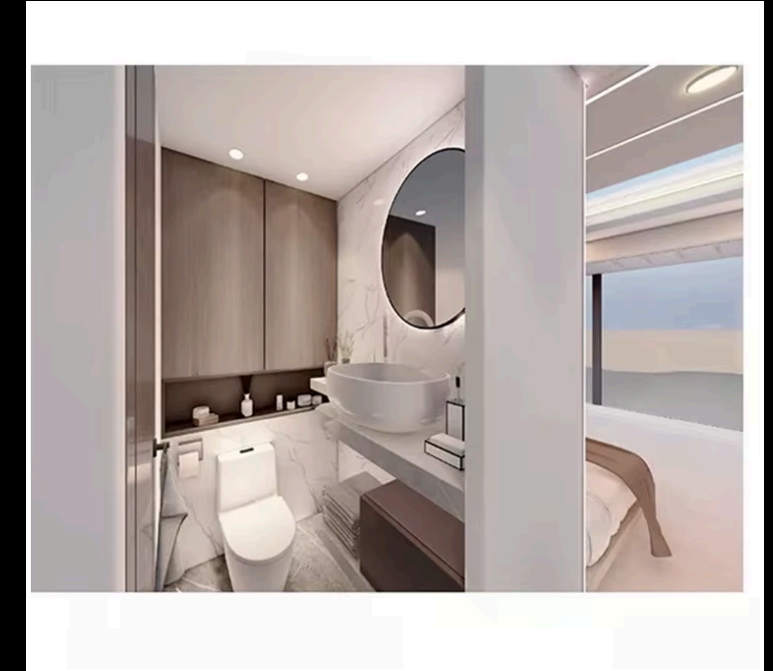
3. Contemporary Living Area

Comfortable, stylish, and fully equipped.

Kitchen with modern appliances for everyday use.

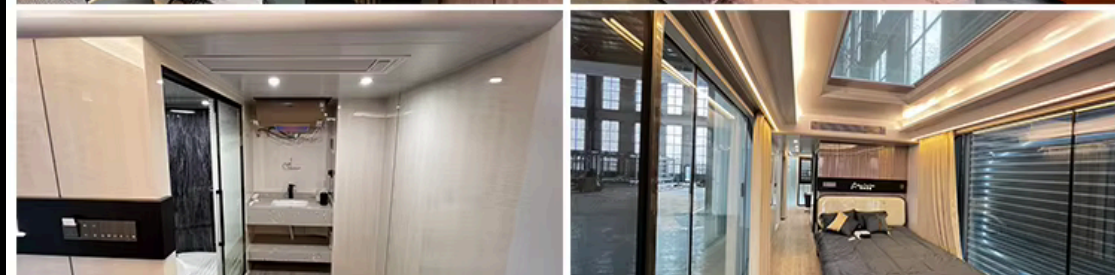
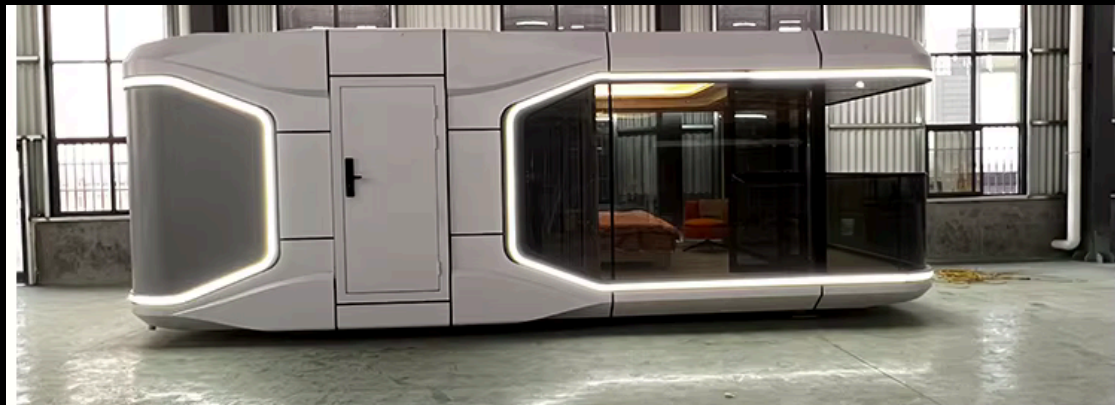
Spacious living and sleeping area for maximum comfort.

Smart home features and energy efficiency built-in.





1. Sustainable & Eco-Friendly
2. Affordable & Cost-Effective
3. Flexible & Mobile
4. Smart Living
5. Investment Potential



## WHY CHOOSE CAPSUL SPACE HOMES?

Smart, sustainable, and built for modern living. Portable, durable, and cost-effective, our homes offer flexibility, efficiency, and style perfect for any lifestyle or investment.



# CONTACT US

INVEST IN A SPACE THAT GROWS WITH YOU

**Phone**

(800) 674-9430

**Email**

team@capsul.homes

**Online**

www.capsul.homes