



# CAPSUL - EXPANDABLE

SMART LIVING. MODERN COMFORT. SUSTAINABLE BY DESIGN.

---

FROM COMPACT TO COMPLETE — YOUR LIFESTYLE, UNFOLDED.



# ABOUT US

DEFINING MODERN LIVING WITH  
UNMATCHED QUALITY IN  
EXPANDABLE CONTAINER HOMES.

---

**At Capsul, we don't just build container homes—we expand what's possible.**

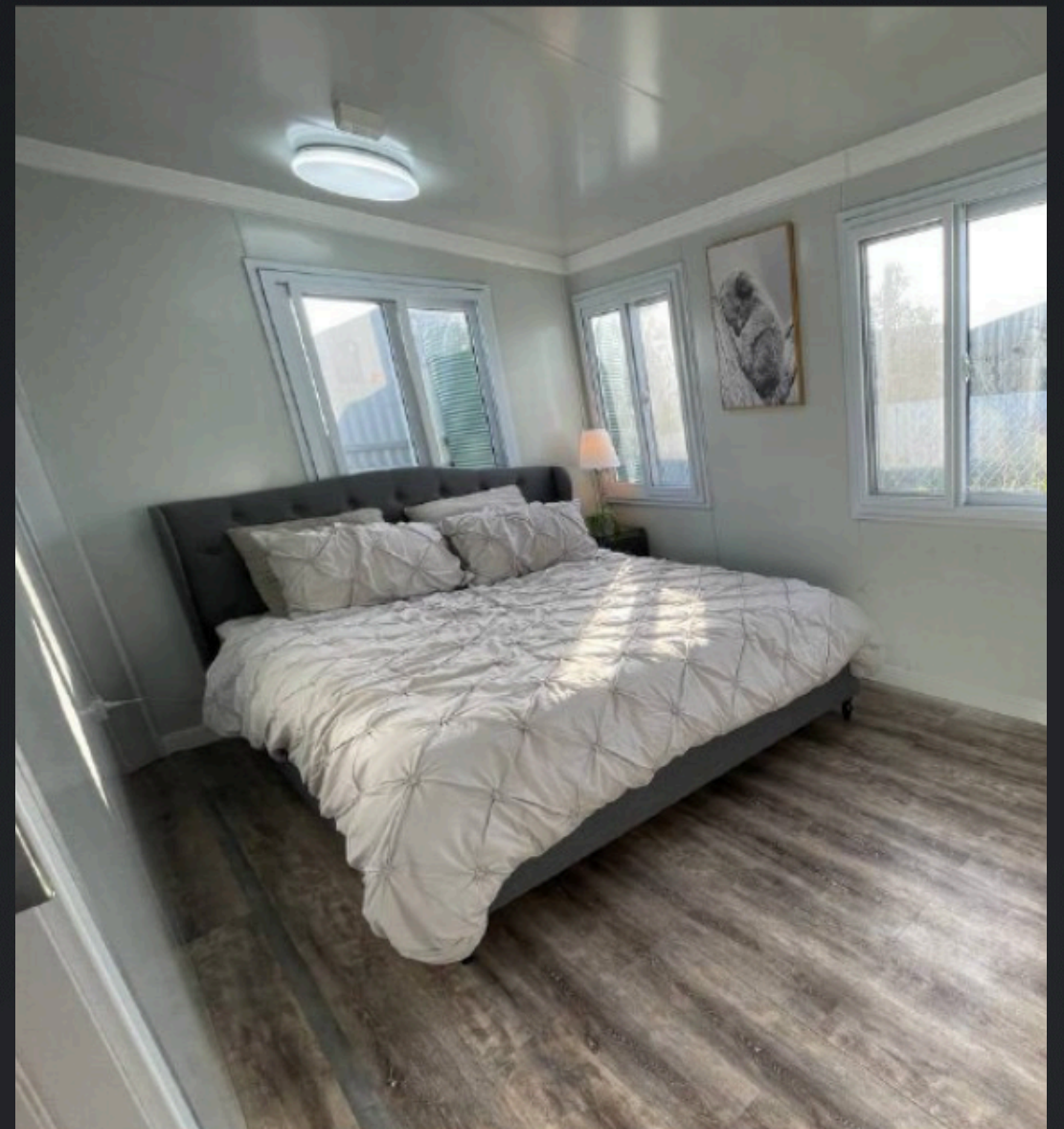
Our innovative expandable units are engineered to triple in size, unfolding into spacious, modern living environments that adapt to your lifestyle. Designed for efficiency, comfort, and sustainability, each unit redefines compact living with smart design and unmatched flexibility.

**Engineered for strength. Designed for living.**

Capsul homes are precision-built for durability, comfort, and effortless style. Delivered move-in ready, each unit blends smart design with sustainable materials—redefining what it means to feel at home, anywhere in the world.







# 20FT HOME

2 Bedroom  
1 Kitchen  
1 toilet  
1 Livingroom



FLOOR PLAN: 20 FT HOME

LENGTH: 20 FEET 2.13 INCHES

HEIGHT: 7 FEET 4.19 INCHES

WIDTH: 17 FEET 10.96 INCHES

20 Foot

6 Meters

20FT  
FLOOR PLAN



# 20FT Over View





# 20FT SPECIFICATIONS

The Capsul Expandable 20FT 2-Bedroom Container Home features a spacious master bedroom and a versatile smaller room, perfect for various needs. With built-in cupboards for smart storage, these well-designed spaces offer comfort, functionality, and flexibility for modern living.



**TWO BEDROOMS, ONE LARGE AND ONE SMALL, INCLUDES  
INTERIOR DOORS AND AT LEAST ONE WINDOW PER BEDROOM**

**2** BEDROOM



# 20FT ROOM SPECIFICATIONS

## European measurements

Bedroom One: 5m<sup>2</sup>

Bedroom Two: 7.8m<sup>2</sup>

## American measurements

Bedroom One: 83.95 sq. ft.

Bedroom Two: 53.81 sq. ft.

## Standard Inclusions

Robust doors with aluminium frames and double glazed tempered glass windows.

18mm fibre cement subfloor board base, pre-fitted to steel frame.





# 20FT KITCHEN, BATHROOM & LIVING

## European measurements

Kitchen & Living: 17.4m<sup>2</sup>

Bathroom: 3.3m<sup>2</sup>

## American measurements

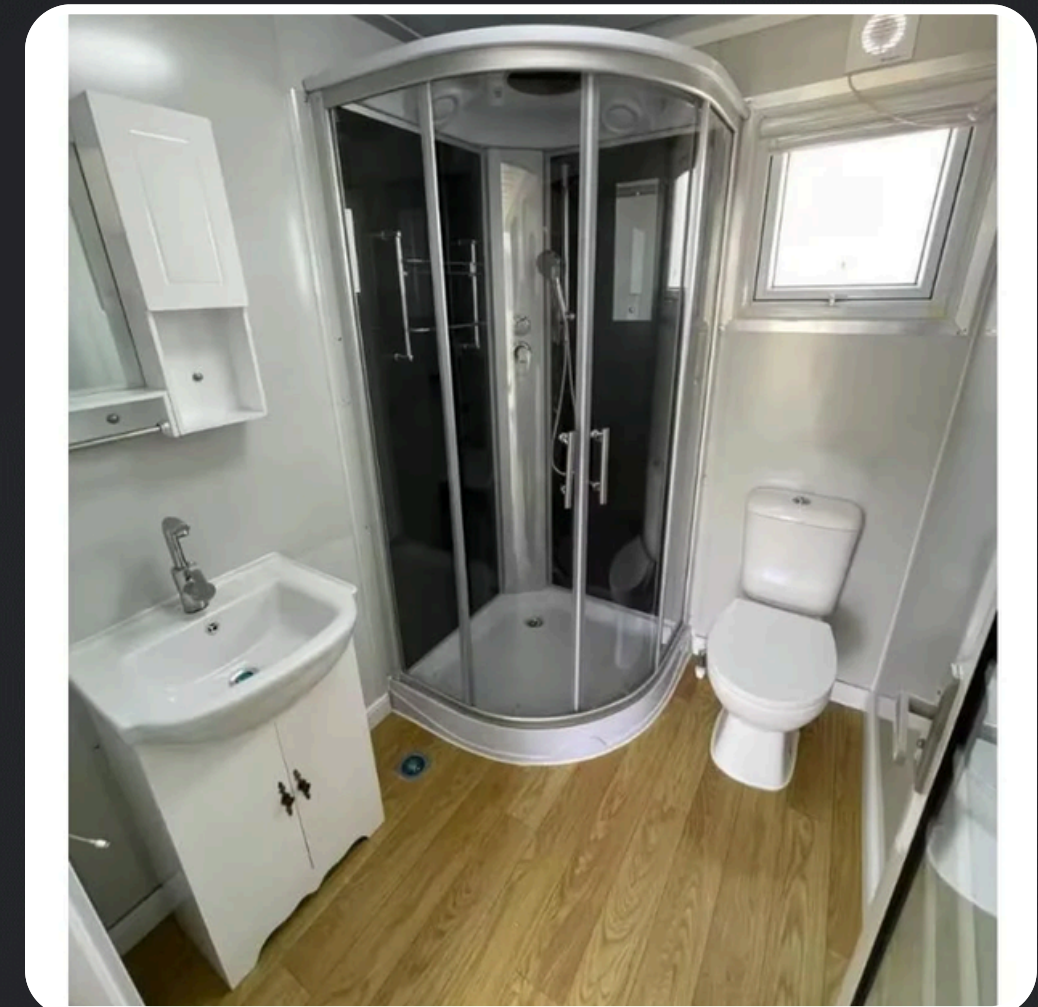
Living & Kitchen: 187.29 sq. ft.

Bathroom: 35.52sq ft

## Standard Inclusions

Kitchen with cabinetry, stone benchtops, cupboards, sink, requires assembly but comes partly assembled

Bathroom with shower, toilet, washer-basin (basin with space for washer underneath), mirror vanity cupboard





# Expandable Kitchen

## Your Kitchen, Your Style

Design a kitchen that fits your needs  
with a smart layout and modern finishes  
perfectly suited for expandable  
container living.

## KITCHEN selectable



**KC01**  
KITCHEN CABINET



**KC02**  
KITCHEN CABINET



**KC03**  
KITCHEN CABINET



**KC04**  
KITCHEN CABINET



**KC05**  
KITCHEN CABINET



**KCX**  
Customized



# Choose Your Window Style It Your Way

Choose from a range of configurations or customize your expandable container to reflect your style, bringing in natural light and modern aesthetics for a space that truly feels like home

## WINDOW selectable



**WN01**

PVC double-glasses  
casement  
930\*930 mm



**WN02**

PVC Single-glass  
slide  
930\*930mm



**WN03**

PVC double-glasses  
slide  
930\*930mm



**WN04**

PVC double-glasses  
casement  
1100\*1200mm



**WN05**

aluminum  
silde  
400\*600mm



**WN06**

aluminum double-glass  
slide  
930\*930 mm



**WN07**

brige-cut aluminum  
double glass  
930\*930mm



**WN08**

brige-cut aluminum  
double glass  
casement  
930\*930mm



**WN02**

Cement fiber floor



**WN05**

FR01+FR04



**WNX**





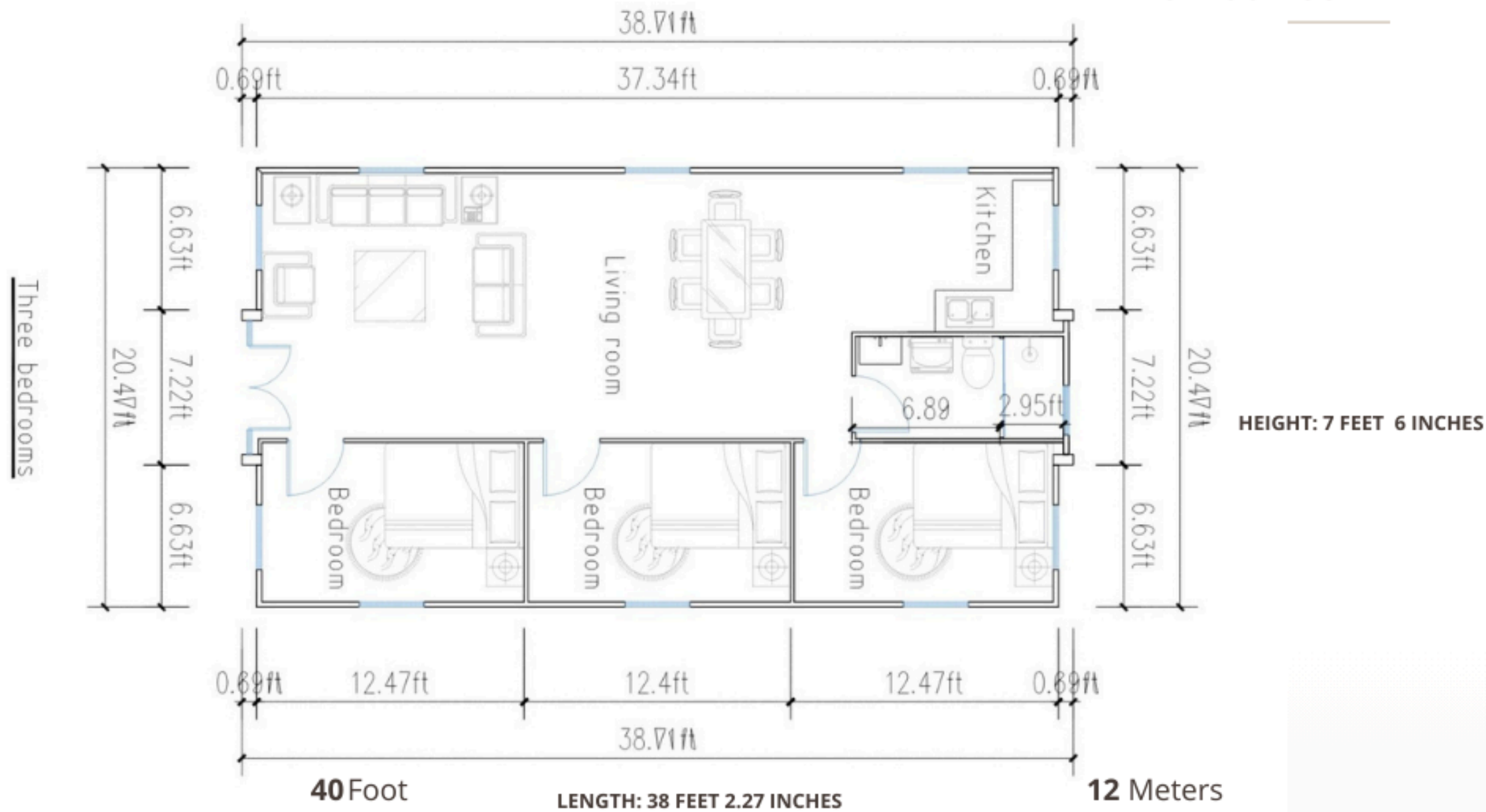
# 40FT HOME

3 Bedroom  
1 Kitchen  
1 toilet  
1 Livingroom



FLOOR PLAN: 40 FT HOME

CAPSUL USA



# 40FT FLOOR PLAN



800

SQ Feet

  
3

  
1

  
1



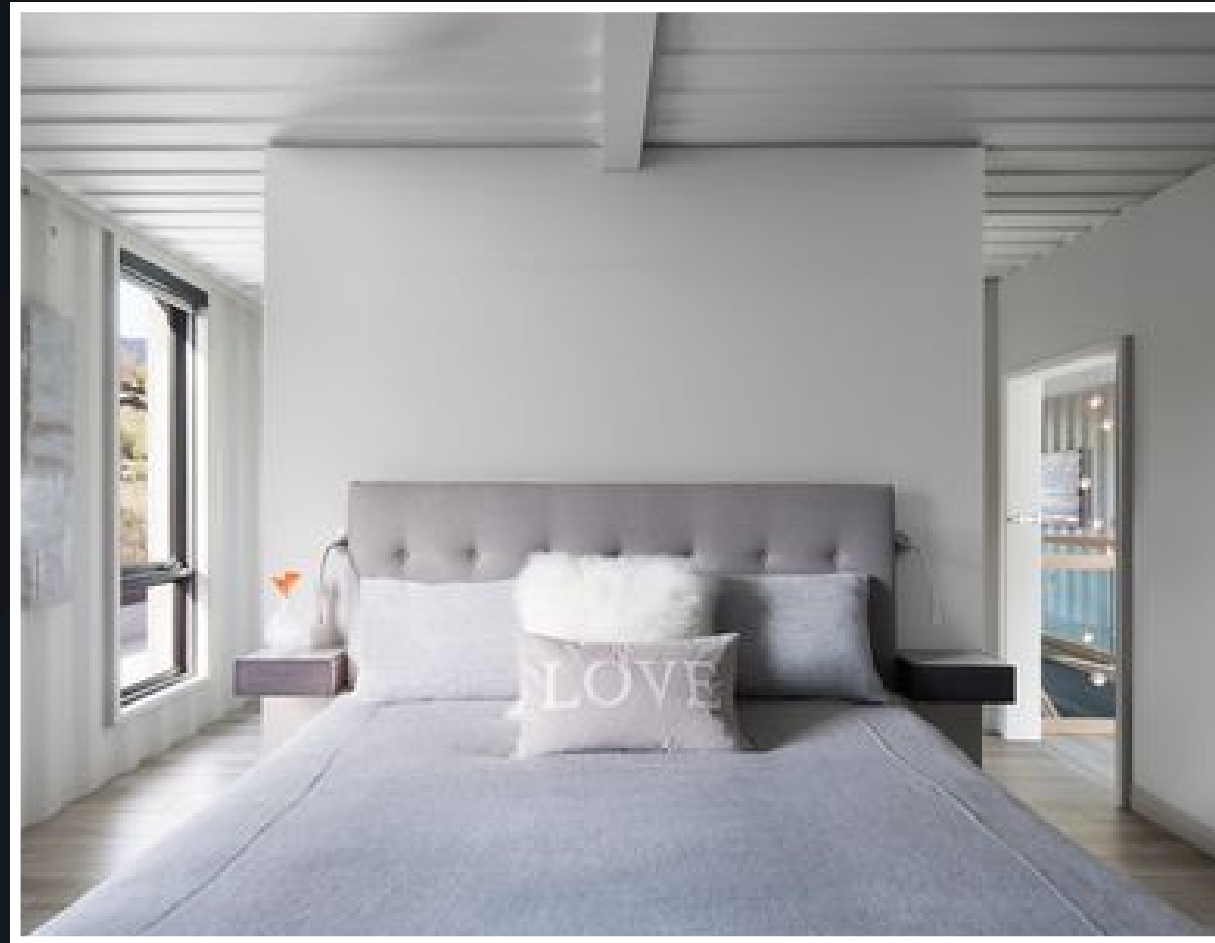
# 40FT Over View



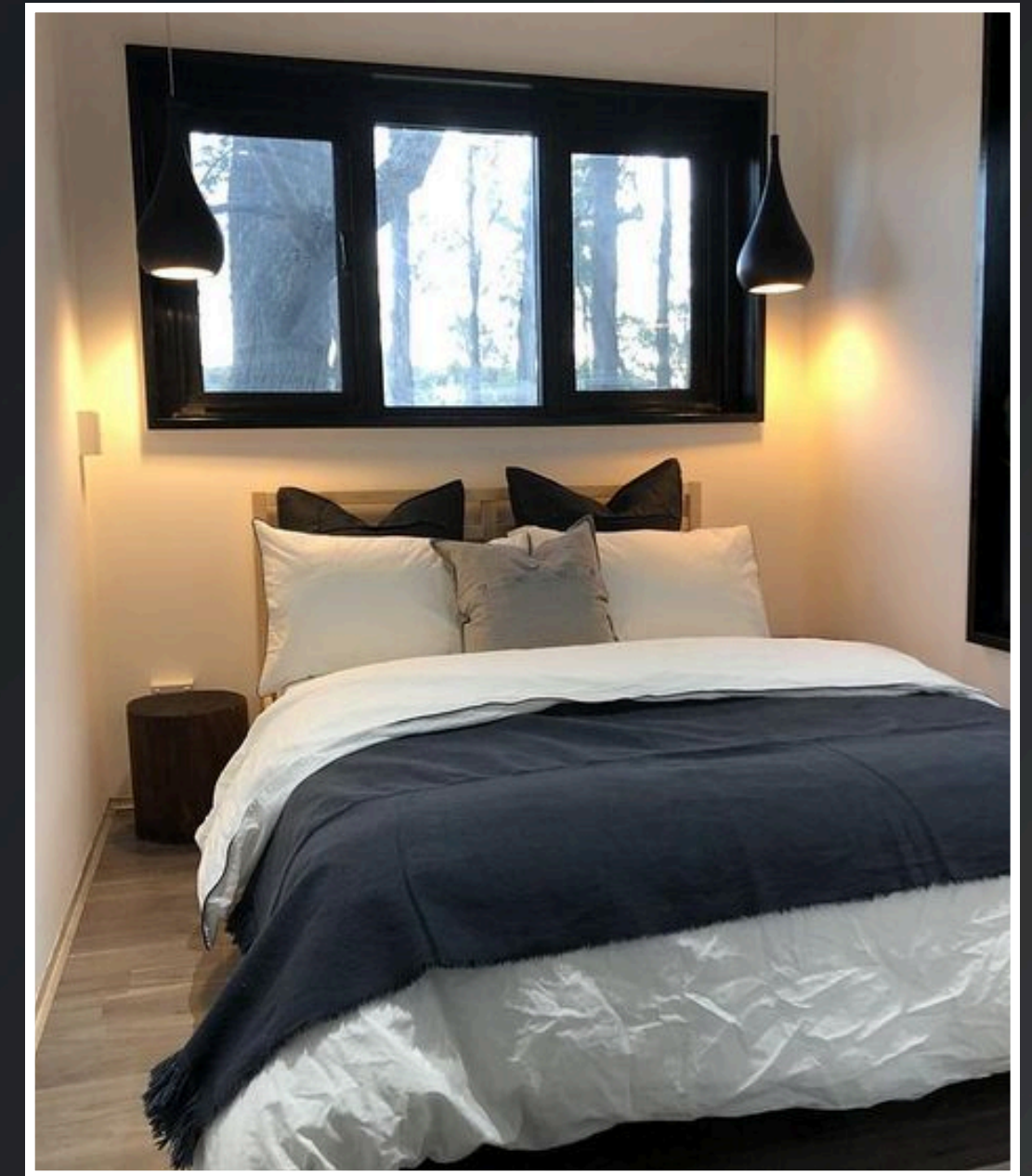


# 40FT SPECIFICATIONS

The Capsul Expandable 40FT 3-Bedroom Container Home features three well-designed bedrooms, offering a perfect balance of space, comfort, and functionality. With smart storage solutions, these rooms provide a cozy and efficient living experience.



## 3 BEDROOM



**THREE BEDROOMS, ONE MASTER ROOM AND TWO EQUAL SIZE, INCLUDES INTERIOR DOORS AND AT LEAST ONE WINDOW PER BEDROOM**



# 40FT ROOM SPECIFICATIONS

## European measurements

Bedroom One: 9.1m<sup>2</sup>

Bedroom Two: 8.9m<sup>2</sup>

Bedroom Three: 8.9m<sup>2</sup>

## American measurements

Bedroom One: 97.95 sq. ft.

Bedroom Two: 95.79 sq. ft.

Bedroom Two: 95.79 sq. ft.

## Standard Inclusions

Robust doors with aluminium frames and double glazed tempered glass windows.

18mm fibre cement subfloor board base, pre-fitted to steel frame.





# 40FT KITCHEN,BATHROOM & LIVING

## European measurements

Kitchen & Living: 39.4m<sup>2</sup>

Bathroom: 3.8m<sup>2</sup>

## American measurements

Living & Kitchen: 424.96 sq. ft.

Bathroom: 40.90 sq. ft.

## Standard Inclusions

Kitchen with cabinetry, stone benchtops, cupboards, sink, requires assembly but comes partly assembled

Bathroom with shower, toilet, washer-basin (basin with space for washer underneath), mirror vanity cupboard, grey marble pattern tiles





# ELECTRICAL

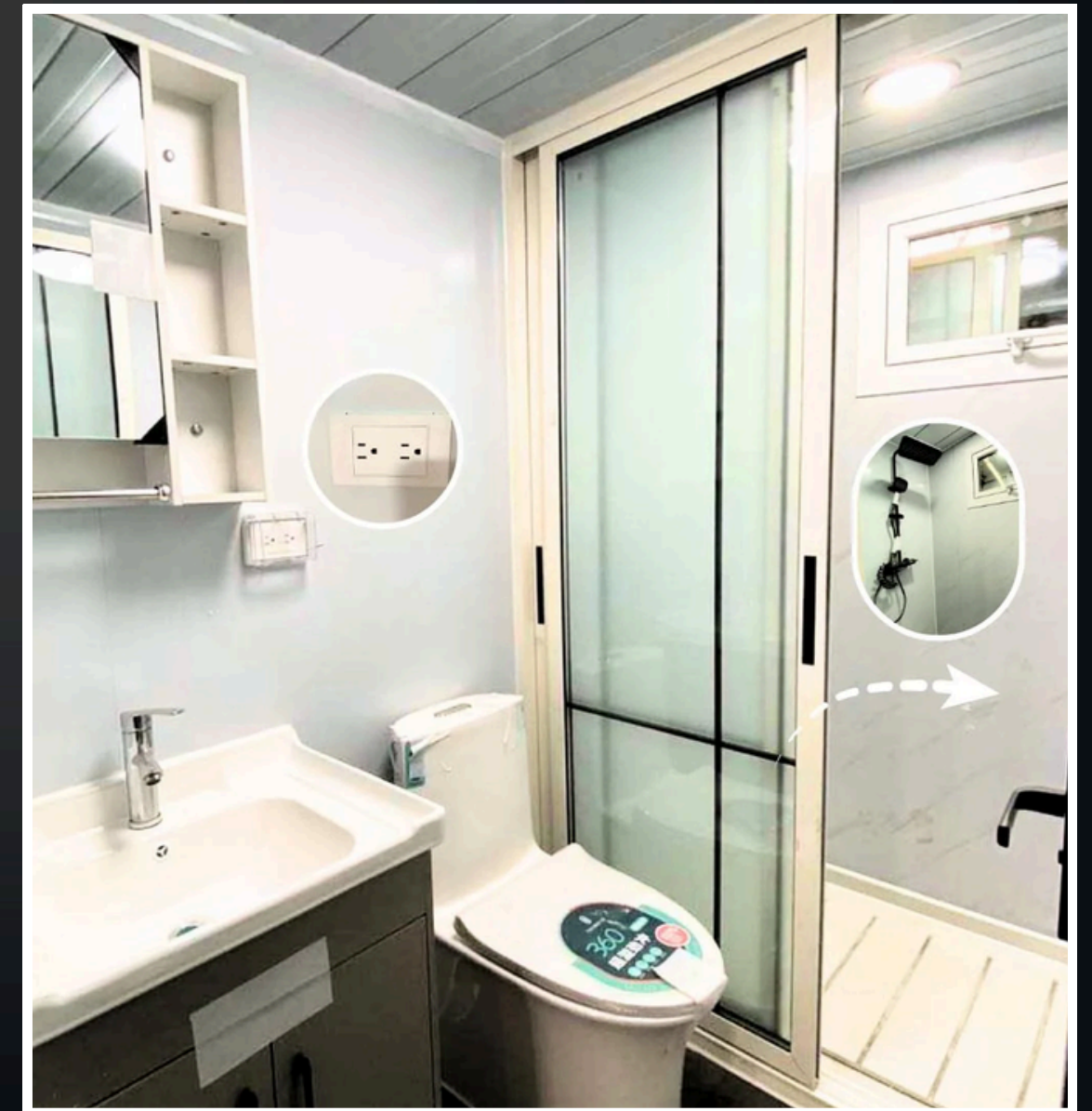
Pre-wired outlets, switches, and power connections for the bedroom, bathroom, kitchen, and living area—plus dedicated circuits for kitchen appliances, electric water heater, and air conditioning, all designed for seamless living in your expandable container home





# PLUMBING

Equipped with pre-fitted hot and cold water inlets for the kitchen sink, bathroom basin, toilet, and shower. Includes certified plumbing fixtures, taps, and shower fittings along with separate drainage systems for grey water and waste water—ensuring quality and compliance in your expandable container home







# THANK YOU

BUILT SMARTER. BUILT FASTER. BUILT FOR TOMORROW.

**Phone**

800-674-9430

**Online**

[team@capsulgroup.com](mailto:team@capsulgroup.com)